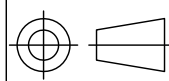


Note:

- 1.All rights reserved.
- 2.Please note that the data is subject to be deleted without advance notice.
- 3.No warranty is given in relation to the data including the specification.
- 4.We are not responsible for any damages or loss caused by the use of the data.

FOR STUDY PURPOSE ONLY



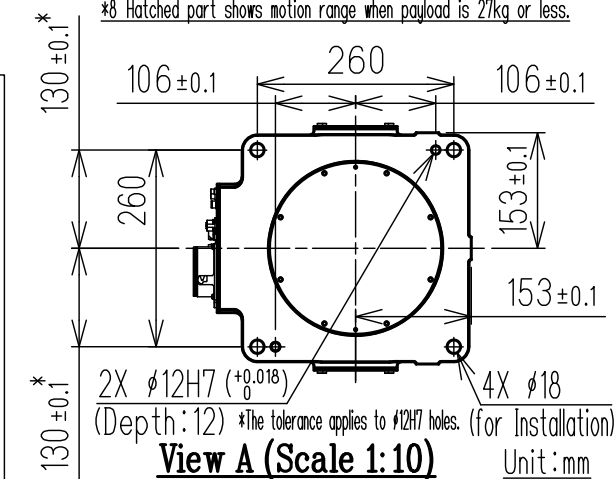
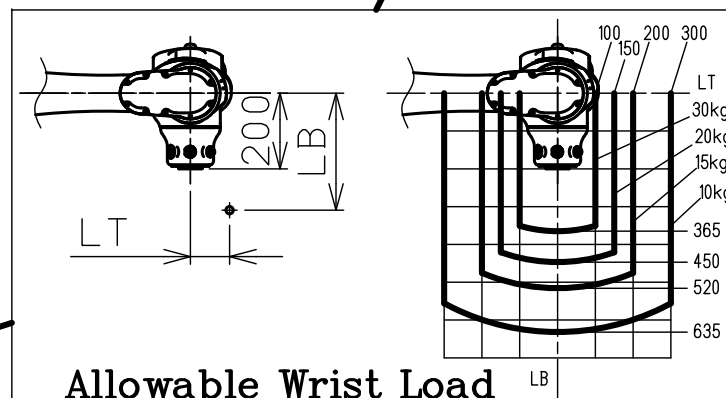
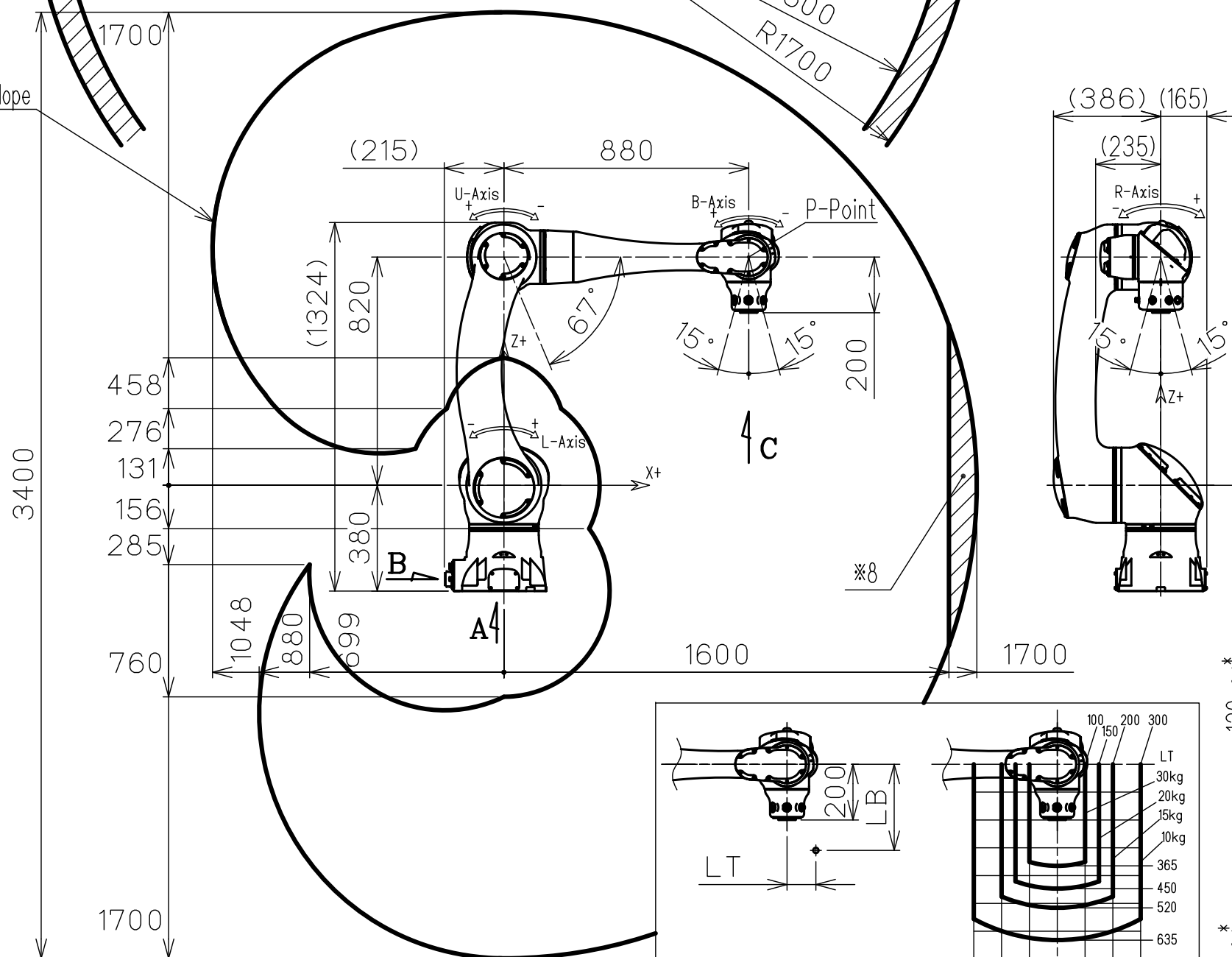
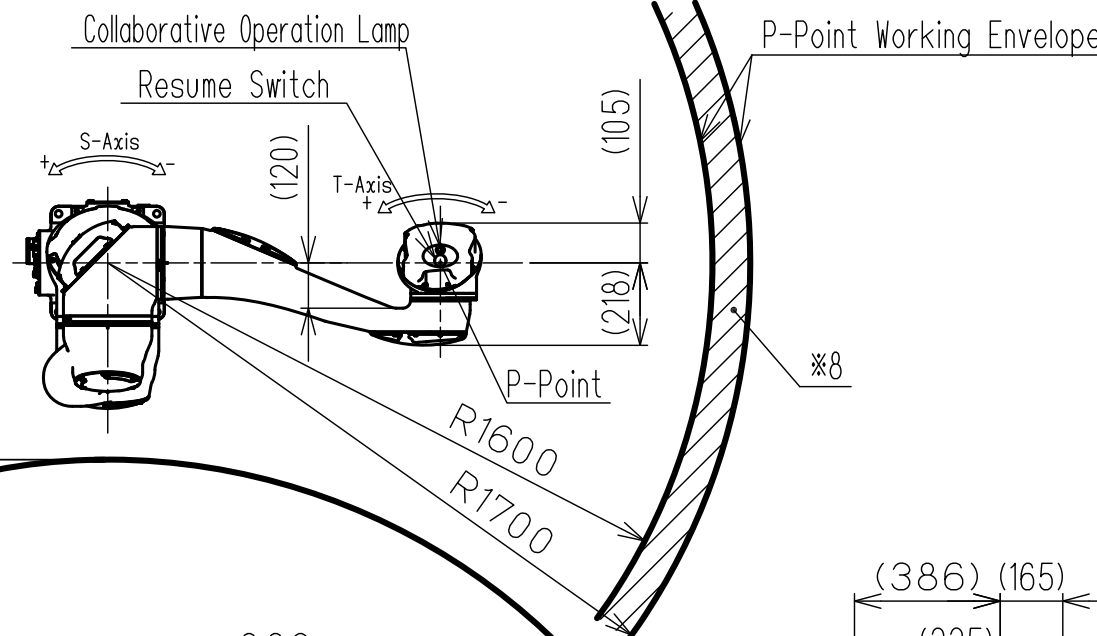
SCALE 1:20

YASKAWA
株式会社 安川電機

Reference Drawing

TITLE	MOTOMAN-HC30PL Dust-/Drip-Proof
DIMENSION	DIAGRAM

Type	Specification
YR-1-06VXCP30-B00	Built-in Air Hoses, Ethernet and I/O (8 wires) Cables



Item \ Model		MOTOMAN-HC30PL
Configuration		Vertically Articulated
Degree of Freedom		6
Payload		30kg
Repeatability *1		0.05mm
Range of Motion	S-Axis (Turning)*3	-210° - +210°
	L-Axis (Lower Arm)	-154° - +180°
	U-Axis (Upper Arm)	-67° - +247°
	R-Axis (Roll)	-15° - +15°
	B-Axis (Pitch/Yaw)	*3 -15° - +15°
	T-Axis (Twist)	-210° - +210°
Maximum Speed*4	S-Axis	1.40rad/s, 80°/s
	L-Axis	1.40rad/s, 80°/s
	U-Axis	2.09rad/s, 120°/s
	R-Axis	1.95rad/s, 112°/s
	B-Axis	2.30rad/s, 132°/s
	T-Axis	3.14rad/s, 180°/s
Allowable Inertia (GD ² /4)	T-Axis	2.0 kg·m ²
Mass		140kg
Protection Rating		IP66/IP67
Clean Rating (Reference) *5		Equivalent to ISO class 5
Mounting Method*7		Floor-mounted
Ambient Conditions	Temperature	0 °C - 40 °C
	Humidity	20%RH - 80%RH (Non-Condensing)
	Vibration Acceleration	4.9m/s ² (0.5G) or less
	Altitude	1000m or less
	Flatness for Installation	0.5mm or less
	Others	*Free from oil soot. *Free from explosive and corrosive gas or liquid. *Free from excessive electrical noise *Free from strong magnetic fields.
Power Requirements *6		1.5kVA
Controller		YRC1000/YRC1000micro

*1 Repeatability conforms to ISO 9283.

*2 The manipulator is in the home position in this drawing.

*3 B-axis motion range shows angle with respect to vertical downward.
This range may be limited according to the relative angle with the upper arm.

*4 The maximum speed value in this table is the available maximum value and will vary depending on the load, posture, or range of motion.

*5 The clean rating is for reference and not a guarantee.

*6 The power requirement value is obtained using YASKAWA's in-house measurement conditions and will vary depending on the load, motion pattern or cycle time.

*7 This manipulator is for Floor-mounted, not for Wall-, Tilt-, Ceiling-mounted.

*8 Hatched part shows motion range when payload is 27kg or less.